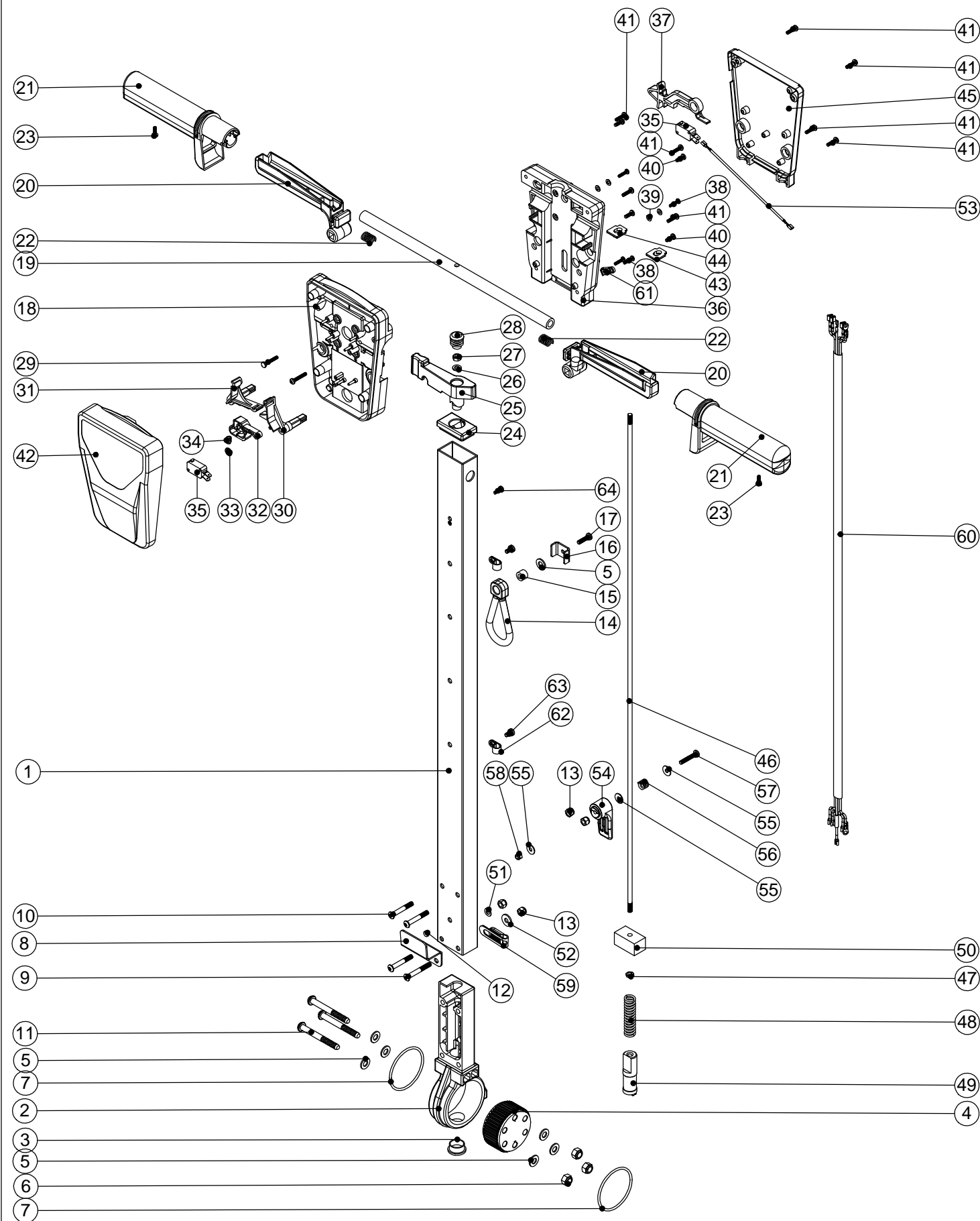


Numatic International Spare Parts

Model No: NLL332 / NLL415 HANDLE

NB: FOR WIRING SEE DRAWING: WD-0341

234456
DRAWING: EXP-0886 ISS:A02
01/10/2007



Numatic International Spare Parts

Model No: NLL332 / NLL415 HANDLE

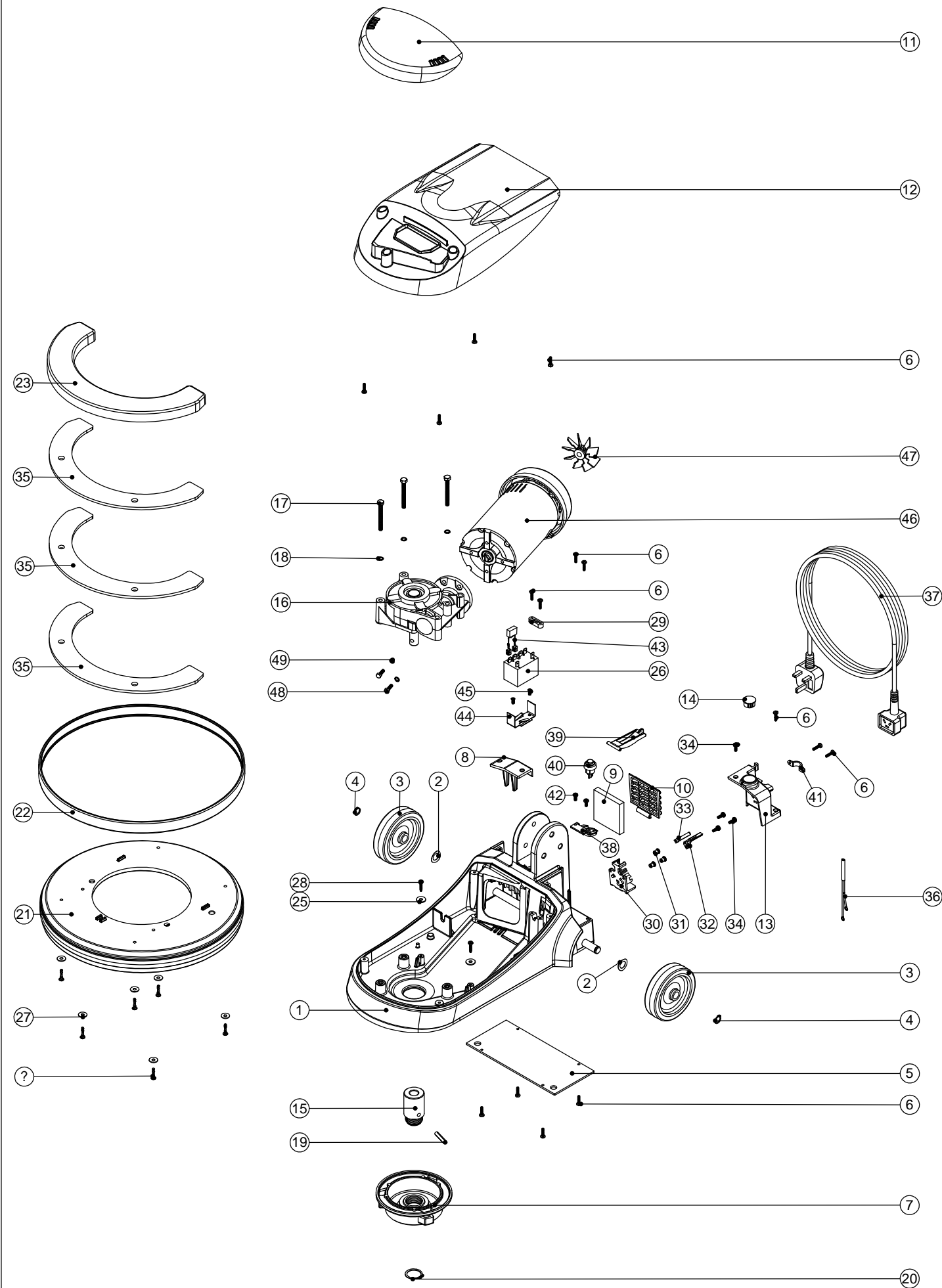
ITEM NO.	Item_No	DESCRIPTION	QTY.
1	429096	LOLINE HANDLE TUBE PAINTED (830)	1
2	229081	HANDLE CASTING MACHINED	1
3	229099	25MM DIA HOLE PLUG	1
4	229482	DUAL SETTING ADJUSTMENT GEAR	1
5	219010	M8 FORM A WASHER	7
6	219078	M8 NYLON INSERT NUT	3
7	219254	O RING 3MM DIA X 60MM I/D	2
8	329000	HANDLE BRACKET	1
9	219881	M6 X 45MM SOCKET BUTTON HEAD SCREW	1
10	219807	M6 X 40MM LONG SOCKET BUTTON HEAD BOLT	3
11	219806	M8 X 70MM LONG SOCKET BUTTON HEAD BOLT	3
12	229009	BLANKING PLUG	1
13	219088	M6 NYLON INSERT NUT	4
14	226008	STRESS RELIEF	1
15	226006	SPACER (BLACK)	1
16	329231	STRESS RELIEF BRACKET	1
17	219054	M5 X 20MM LONG POZI PAN SCREW	1
18	227576	FRONT INNER HALF MOULDING	1
19	338269	CROSS TUBE	1
20	227581	TRIGGER MOULDING	2
21	227580	HAND GRIP MOULDING	2
22	219803	TRIGGER COMPRESSION SPRING	2
23	219270	No8 X 1/2 INCH LONG POZI PAN SELF TAP SCREW	2
24	227582	HANDLE PLUG MOULDING	1
25	227583	ADJUSTMENT LEVER MOULDING	1
26	219493	M6 NYLON WASHER	1
27	219642	M6 STAINLESS STEEL NYLON INSERT NUT	1
28	20638V	19MM BLACK TUBE END STOP	1
29	219811	NO8 X 1 INCH LONG POZI-PAN SELF TAP SCREW	2
30	227585	LEFT HAND SWITCH OPERATING LEVER MOULDING	1
31	227586	RIGHT HAND SWITCH OPERATING LEVER MOULDING	1
32	227587	CENTRE SWITCH OPERATING LEVER MOULDING	1
33	219805	4MM SPIREFIX	1
34	219804	SWITCH COMPRESSION SPRING	1
35	229483	SNAP ACTION SWITCH	2
36	227577	REAR INNER HALF MOULDING	1
37	227584	INTERLOCK LEVER MOULDING	1
38	219107	No6 X 5/8 INCH LONG POZI PAN PLASTITE SCREW	4
39	219206	M4 FORM A WASHER	4
40	219101	No8 X 1/2 INCH LONG POZI PAN PLASTITE SCREW	4
41	219105	No8 X 5/8 INCH LONG POZI PAN PLASTITE SCREW	8
42	318959	PRINTED FRONT COVER MOULDING	1
43	329539	MODIFIED BLANKING PLATE	1
44	227666	BLANKING PLUG	1
45	318968	PRINTED REAR COVER MOULDING	1
46	229484	840MM HANDLE LOCKING ROD	1
47	219099	M6 HALF NUT	1
48	229138	SPRING	1
49	229073	GEAR LOCKING PIN	1
50	229030	ANTI VIBRATION PAD	1
51	219007	M6 FORM B WASHER	1
52	219008	M6 FORM G WASHER	1
53	230082	150MM LONG WHITE LINK WIRE	1
54	227807	CABLE RELEASE TOP MOULDING	1
55	219644	M5 FORM G STAINLESS STEEL WASHER	3
56	206599	SPRING (REF:C5514370)	1
57	219720	M5 X 30MM LONG STAINLESS STEEL POZI PAN SCREW	1
58	219076	M5 NYLON INSERT NUT	1
59	229139	P-CLIP	1
60	236132	NLL 5 CORE LOOM ASSEMBLY	1
61	229669	LOLINE HANDLE CABLE CLAMP	1
62	219393	P CLIP	2
63	219047	M5 X 10MM LONG POZI PAN SEMS SCREW	2
64	219471	M4 X 12MM LONG POZI PAN SEMS SCREW	1

Numatic International Spare Parts

Model No: NLL332 / NLL415 EXPLODED DRAWING (EXP-0885)

234454
DRAWING: EXP-0885
 26/11/2009 A07

NB: FOR WIRING SEE DRAWING: WD-0341



Numatic International Spare Parts

Model No: NLL332 / NLL415 EXPLODED DRAWING (EXP-0885)

POS:	ITEM NO:	DESCRIPTION:	COMMENTS:
1	304264	NLL BASE ASSEMBLY (LESS MOTOR SUPPORTS)	
2	219891	13MM WAVEY WASHER	
3	329112	100MM WHEEL	
4	219345	12MM EXTERNAL CIRCLIP	
5	304236	BASE PLATE	
6	219914	NO6 X 5/8 INCH LONG POZI-PAN PLASTITE STAINLESS STEEL SCREW	
7	230207	DIE CAST CHUCK MACHINED	
8	229667	FILTER COVER TOP	
9	329522	FILTER	
10	229668	FILTER COVER	
11	229663	CAP MOULDING (GREY)	
12	328113	NLL332 LID MOULDING PRINTED GREY	
	328114	NLL415 LID MOULDING PRINTED	415 MODEL
13	206866	10A INPUT COVER C/W WINDOW PLUG	
14	220967	LENS COVER	
	206754	18.67:1 GEARBOX (GB12)	415 MODEL
18	219224	M6 X 55MM LONG HEX HEAD BOLT	
15	229182	DRIVE SHAFT	
16	206737	EMD GEARBOX (GB12) (14:1 RATIO)	
	229718	DECK MOULDING (360MM)	415 MODEL
18	219544	M6 SHAKEPROOF WASHER	
	214112	BUFFER RING	415 MODEL
19	219523	GROOVED PIN	
20	230048	26MM EXTERNAL CIRCLIP	
21	229664	DECK MOULDING (330MM)	
22	214111	BUFFER RING	
23	229680	DECK WEIGHT COVER	
24	219568	No8 X 3/4 INCH LONG POZI PAN STAINLESS STEEL SCREW	
25	219497	M5 NYLON WASHER	
26	206575	240V / 25A RELAY	
27	219644	M5 FORM G STAINLESS STEEL WASHER	
28	221152	No6 X 12MM LONG POZI PAN SELF TAP SCREW	
29	227008	BLACK CABLE CLAMP	
30	216288	TERMINAL BLOCK	
31	219009	M4 BRASS TAPPEX INSERT	
32	206563	EARTH CONTACT PIN	
33	206562	CONTACT PIN	
34	219471	M4 X 12MM LONG POZI PAN SEMS SCREW	
35	429098	DECK WEIGHT (PAINTED SILVER GREY)	
36	321193	AC LED WITH TERMINALS	
37	236074	MAINS CABLE (15.0 METERS / 1.0MM / 3 CORE CABLE / SOCKET + EURO PLUG)	
37	236086	MAINS CABLE (15.0 METERS / 1.0MM / 3 CORE CABLE / SOCKET + AUSTRALIAN PLUG)	
37	236077	MAINS CABLE (15.0 METERS / 1.0MM / 3 CORE CABLE / SOCKET + SWISS PLUG)	
37	236080	MAINS CABLE (15.0 METERS / 1.0MM / 3 CORE CABLE / SOCKET + SOUTH AFRICAN PLUG)	
37	236071	MAINS CABLE (15.0 METRES / 1MM / 3 CORE CABLE / SOCKET + UK PLUG)	
38	216293	LEVER PLATE	
39	216292	CUT OUT LEVER	
40	229454	HANDLE SWITCH	
41	229729	10AMP PLUG CLAMP	
42	219677	No4 X 10MM LONG POZI PAN PLASTITE SCREW	
43	230136	SUPPRESSOR ASSEMBLY	
44	206500	RELAY BRACKET	
45	219651	M4 X 10MM LONG POZI PAN THREAD CUTTING SCREW	
46	205166	PSC INDUCTION MOTOR & RUN CAP (220-240V) (50HZ) (NL332/415)	
47	330017	FAN AND BORE ASSEMBLY	
48	219904	M5 X16MM LONG HEXAGONAL STAINLESS STEEL BOLT	
49	219016	M5 SHAKEPROOF WASHER	

PRE-2009 MACHINES USE 310041 REPLACEMENT MOTOR KIT (HIDRIA)