



## **Instruction Manual**

# **80 LITRE CARPET EXTRACTOR**

**Model: VC80LX**



- **Please read this Instruction Manual carefully before operation and follow all guidelines before using this vacuum cleaner.**
- **Please keep this Manual for future reference.**

## **\*\*\* SAFETY RULES & CAUTIONS \*\*\***

**Please be sure to read this Instruction Manual thoroughly before operating the machine.**

This manual contains important information on the safe operation and maintenance of this machine. If you try to operate the machine or perform any maintenance without reading this manual, it might cause danger to you or other people, or cause damage to the machine or other substances. The operators must accept adequate training before they are allowed to operate this machine.

1. Check before operation that the local power supply is the same as the specification on the rating label of the machine.
2. The machine is not suitable for picking up dusts, objects or liquids which are explosive, flammable, poisonous, or in any way represent a danger to health.
3. Do not use machine in combustible or explosive areas in case the motor spark causes a fire.
4. Do not jam the air inlet mouth, in case temperature rises and damages the motor.
5. Do not collect sharp objects.
6. Do not collect objects which can easily attach on the filter such as calcareous powder, gesso and graphite powder, they will block the ventilation and damage the motor.
7. Do not overturn the machine in case water goes into the motor and damages the motor.
8. Do not trample or drag the hose.
9. Do not immerse the barrel cap into water or wash with water.
10. Check the mains cable to ensure it is ok before using the machine. Every care must be taken to avoid damaging the mains cable. To avoid electric shock, please immediately stop this machine when the power cord is damaged.
11. If the power supply cord is damaged, it must be replaced by the manufacturer, its service agent or similarly qualified persons in order to avoid a hazard.
12. All plugs and sockets used must be water-proof. Use only in 220v/240v plug and points.
13. Turn off the machine and remove the plug from the socket each time after using or when being repaired.
14. Keep the machine away from strong sunlight and high temperature places in case its plastic is distorted.
15. Always keep the machine as clean and dry as possible – don't leave it for a long time with dust or water.
16. When there is any foam or liquid overflowing, please immediately disconnect the machine from the power supply and find out the cause and eliminate it.
17. The machine is very heavy, therefore do not stop the machine on a slope or inclined face, and never start the machine on a slope.
18. Do not clean with the water higher than 60°C otherwise this may cause damage to the machine.
19. This appliance is not intended for use by persons (including children) with reduced physical, sensory or mental capabilities, or lack of experience and knowledge, unless they have been given supervision or instruction concerning use of the appliance by a person responsible for their safety.
20. Children should be supervised to ensure that they do not play with the appliance.

# FEATURES & TECHNICAL SPECIFICATIONS

The VC80LX (80 Litre) Carpet Extraction Machine is intended for cleaning carpet and fabric upholstery. With one wash, the machine completes the three processes of spraying, purge and drying, resulting in a thorough deep clean.

## Product Features

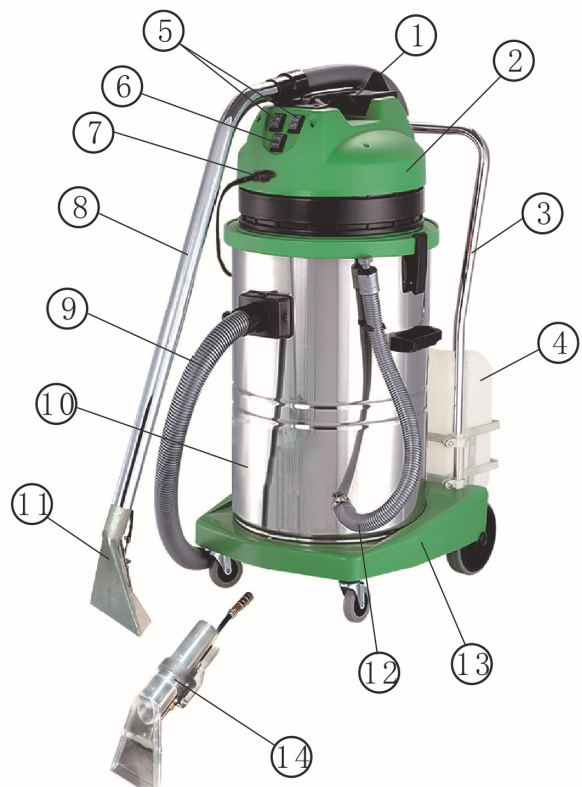
- 2 x 1000 watt motor (motors work at the same time to give you stronger suction)
- Strong and durable Stainless Steel Tank
- Can also be used as a wet and dry vacuum cleaner
- Dump valve drainage hose

TECHNICAL SPECIFICATIONS				
<b>Model</b>	VC80LX Carpet Extractor (Stainless Steel Tank)		<b>Capacity</b>	80 Litres
<b>Power</b>	2000 Watts	<b>Voltage</b>	220-240V / 50-60Hz	
<b>Tank Height</b>	970mm	<b>Tank Diameter</b>	440mm	
<b>Vacuum Suction</b>	250mbar	<b>Air Flow Rate</b>	106 L/sec	
<b>Mode of Cooling</b>	Cycle air-cooled	<b>Pressure</b>	30PSI	
<b>Accessories</b>	40mm	<b>Cable Length</b>	8 metres	
<b>Carpet Wand - Head Width</b>	250mm	<b>Upholstery Tool - Head Width</b>	85mm	

## VACUUM ATTACHMENTS & ACCESSORIES:

- 1 Suction Hose
- 2 Machine End Connector
- 3 Hose Cuff Connector
- 4 Metal Wands (2pcs)
- 5 Dry Floor Brush
- 6 Wet Floor Brush (Squeegee)
- 7 Crevice Tool
- 8 Dusting Brush

1. Lift Handle
2. Head Unit
3. Grab Handle
4. Liquid Tank
5. Fan Switch
6. Water Pump Switch
7. Quick Connector
8. Steel Pipe
9. Air Suction Pipe
10. Steel Drum
11. Big Water Sucker
12. Sewage Pipe
13. Chassis
14. Small Water Sucker



**CAUTION: ALWAYS UNPLUG THE APPLIANCE BEFORE YOU REMOVE ACCESSORIES OR CLEANING OR MAINTAINING THE APPLIANCE.**

## **MAINTENANCE**

**Always unplug the appliance before you remove accessories or cleaning or maintaining the appliance.**

1. Always keep the machine clean.
2. Add 7.5 litres of clean warm water (below 50°C) into the clear water tank. Then start the water pump, nozzle and sucker to run for 1 minute. This can prevent the deposit of alkali substances.
3. Wash off dirt and wool on the floating ball support in sewage tank. The wool must be thoroughly eliminated to ensure that air flow outlet will not be obstructed.
4. Check the filter at the inlet of clear water tank for any wool or dirt. If any, remove them.
5. Clean the dirt of filter, take the filter out and rinse it with water or use a soft brush to wash it.
6. To eliminate the residual alkali liquid, please purge with vinegar solution (1:3 mixture of vinegar and water). Purge at least every month.
7. Be sure to open the drain valve before putting the machine away for storage or when not in use.

## **INSTRUCTIONS FOR CLEANING FUNCTION**

**\*\*\* NOTE: Remember to remove the cloth filter bag from the machine when using the extraction function.**

### **CLEANING CARPETS**

- When cleaning carpet, you must connect the large floor wand (see No.11 in diagram - big water sucker).
- Connect the cuff end of the vacuum hose to the upper end of the steel pipe on the large floor wand, then connect the machine end of the vacuum hose to the square connector on the tank of the machine.
- Connect the male quick connector on the long solution hose to the female quick connector attached to the handle of the large floor wand. Then connect the other male quick connector at the other end of the long solution hose into the female quick connector located under the on/off switch.
- Add 20 Litres of clear water into water/liquid tank. If carpet needs a deep clean, you can add a low foam carpet cleaning solution into the water/liquid tank (1:12 mixture of carpet cleaning solution and water).
- Turn on the pump switch and both suction switches.
- Holding the large floor wand, press the trigger to release the spray onto the carpet and direct over the area to be cleaned.
- Refill the water/liquid tank as required, and empty the large tank of dirty water when it becomes full by releasing the dirty water through the drainage hose.

### **CLEANING UPHOLSTERY**

- When cleaning smaller areas such as couches, chairs and upholstery, you must connect the small upholstery tool (see No.14 in diagram - small water sucker).
- Connect the cuff end of the vacuum hose to the steel pipe on the upholstery, then connect the machine end of the vacuum hose to the square connector on the tank of the machine.
- Connect the male quick connector on the long solution hose to the female quick connector attached to the handle of the upholstery tool. Then connect the other male quick connector at the other end of the long solution hose into the female quick connector located under the on/off switch.
- Then follow the same steps as above to add clear water to the water/liquid tank and turn on the machine.
- Holding the upholstery tool, press the trigger to release the spray and direct over the area to be cleaned.
- Refill the water/liquid tank as required, and empty the large tank of dirty water when it becomes full by releasing the dirty water through the drainage hose.

# **INSTRUCTIONS FOR VACUUMING**

To use the machine as a vacuum cleaner, you can use the included vacuum attachments. Firstly you should unclip the solution hose line from the vacuum hose as this is not required when vacuuming. Connect the machine end of the vacuum hose to the square connector on the tank, and then connect the other end of the vacuum hose with the assembled metal wand. For floor cleaning, simply attach either the dry floor brush (for dry pick-up) or wet floor brush (for wet pick-up) to the end of the metal wand. If you wish to use the crevice tool or dusting brush, simply remove the wand and attach the tools to the end of the vacuum hose. Remember that this machine has two vacuum motors and can be operated with either one or both motors in use (note: do not turn on the pump/spray switch when using for vacuuming only).

## **INSTRUCTIONS FOR DRY VACUUMING**

- Before vacuuming dry dust, make sure that the cloth filter bag is always fitted, regardless of whether a paper dust bag is also used or not.
- Empty dust from the tank as required.
- The cloth filter bag can be cleaned by beating or brushing it over a rubbish bin (these must be replaced at regular intervals according to level of use)
- When the tank is full of dust, this can cause the suction to decrease. You should turn the machine off and disconnect the plug from the power socket before cleaning or maintenance.
- Clean the dust away from the tank by unfastening the lid and lifting up the top cover. Then remove the cloth filter bag and clean the dust inside the tank. Install the filter bag back and place the top cover on.

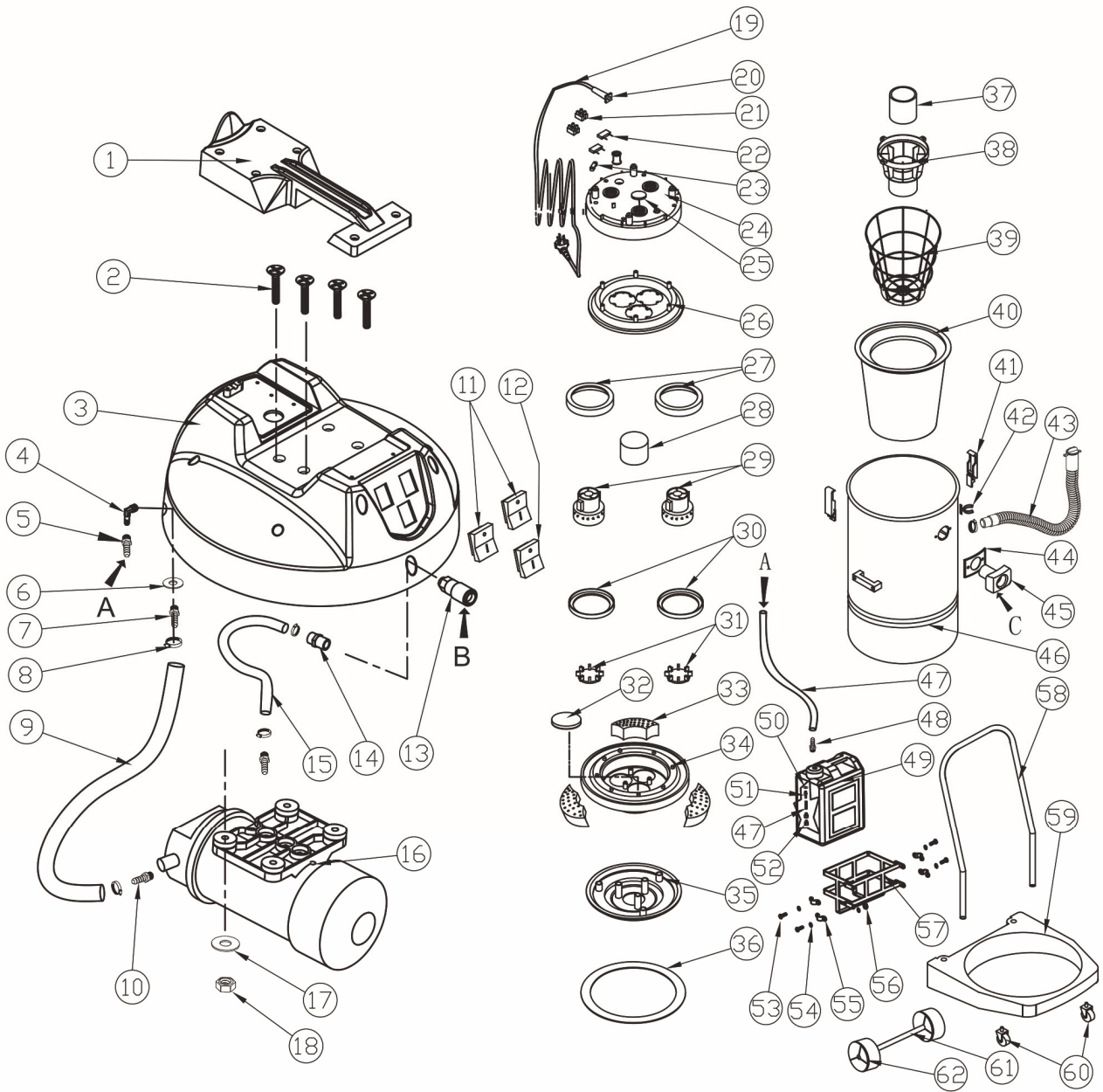
## **INSTRUCTIONS FOR WET VACUUMING**

- Always ensure that the cloth filter bag and paper bags are removed before vacuuming water.
- When the water in the barrel is full, the float begins to work. The suction power will disappear and the machine will make a noise which indicates the motor is running at a high speed.
- When the float is working and cutting off suction, you should turn off the machine and empty the dirty water from the tank by pulling out the plug from the drainage hose and release the dirty water. The machine should start to work normally again.
- If the machine becomes overturned you should turn it off, stand up the machine correctly and then turn on the machine. When the float is working (cutting of suction when the water is full), the motor will be damaged if you continue to use the machine. Under this circumstance, you should stop using the machine and clean out the water.

# TROUBLESHOOTING

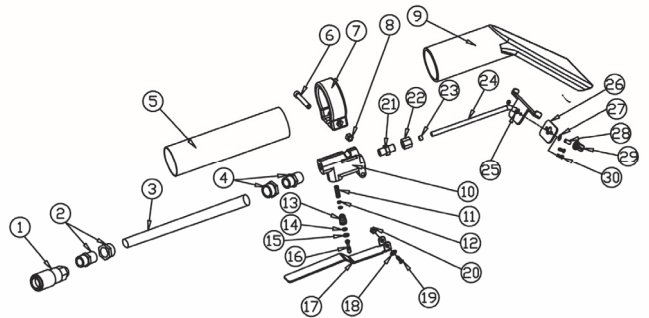
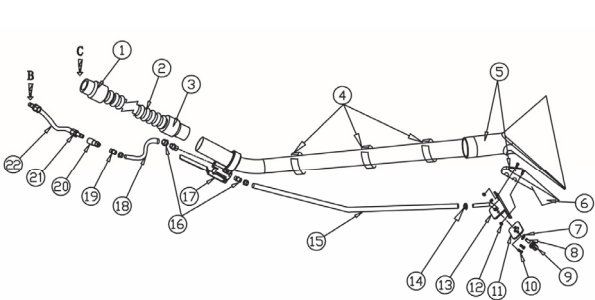
Sympton	Cause	Solution
No power supply	The power cord is damaged.	Replace the power cord.
	The power supply in the house or building is disconnected or tripped.	Check, repair or replace.
The power is switched on, but all the motors run intermittently	Power cord problem.	Repair or replace.
	The switch is damaged.	
	The terminal is loose or the contact is poor.	
No sucking force or the sucking force is low	The drain valve is open.	Close the drain valve.
	The gap between the motor head and tank is unsealed.	Tighten and seal it.
	The interface between the aspiration pipe and the interface on the tank is unsealed.	Plus in and seal it.
	The water suction pipe is blocked.	Clean the aspiration pipe.
	There is dirt deposited on the floating ball support.	Remove the dirt.
	The aspiration pipe is damaged.	Replace the aspiration pipe.
	The vacuum motor installation is loose.	Tighten the screws.
	The pump has started, but the nozzle fails to spray the solution	The nozzle is blocked.
Filter on the bottom of the water tank is blocked.		Clean the filter.
The pump is damaged.		Repair or replace.
Foreign material exists in the pump.		Repair.

# EXPLODED DIAGRAM



**Large Floor Wand (Big Water Sucker)**

**Upholstery Tool (Small Water Sucker)**





**Cleanstar Pty Ltd**

**ABN: 51 121 002 104    ACN: 121 002 104**

**59 Radford Road, Reservoir VICTORIA 3073**

**Phone: (03) 9460 5655    Fax: (03) 9460 5666**

**Email: [sales@cleanstar.com.au](mailto:sales@cleanstar.com.au)    Web: [www.cleanstar.com.au](http://www.cleanstar.com.au)**

## **CONDITIONS OF WARRANTY**

**This document outlines the terms and conditions of warranty for your Cleanstar product. This is an important document that should be kept with your proof of purchase documents in a safe place for future reference should you require service for your product.**

Thank you for purchasing your new Cleanstar product. We are confident this product will give you trouble-free use and excellent service, provided the operator uses and maintains the product in accordance with the Instruction Manual. Please read the Instruction Manual carefully before using the product for correct operation and maintenance procedures, and store it in a safe place for future reference.

1. This is a parts and labour warranty against faulty or defective parts, materials or workmanship in manufacturing, when the product is used and operated in accordance with the Instruction Manual.
2. This product carries a 12 month (1 year) warranty period that commences from the original date of purchase by the first user/purchaser, and is not transferable.
3. This warranty only applies to products purchased and used in Australia.
4. At all times during the warranty period, Cleanstar shall, at its sole discretion, determine whether repair, replacement or refund will apply if the product has a valid warranty claim applicable to it.
5. The repair or replacement of the product under this warranty does not extend the original period of warranty.
6. Please note that this warranty will be voided in the following cases (which are not exhaustive) and the warranty does not apply to the cost of replacing any parts of the product resulting from:
  - Accidental damage;
  - Normal wear and tear;
  - Neglect, misuse or physical abuse by the operator, including failure to properly maintain or service;
  - Any alterations, modifications or tampering with the product without the prior written consent of Cleanstar;
  - Incomplete or improper installation;
  - Incorrect, improper or inappropriate operation;
  - Insect or vermin infestation;
  - Power surges, electrical storm damage or incorrect power supply/voltage;
  - Excessive use or use for which this product has not been designed;
  - Vacuuming up toner, powders, glass, hazardous, flammable or corrosive materials, plaster dust, concrete dust and other similar building or construction materials;
  - Failure to comply with the operating instructions contained in the Manual supplied with the product;
  - If the product is rented;
  - If the product is used outside of Australia;



- If the product was serviced or repaired by anyone other than Cleanstar, or one of Cleanstar's Authorised Service Agents (ASA). Cleanstar is unable to accept any responsibility under this warranty for any repair work not carried out by an ASA or from the use of non-genuine parts.
7. This warranty does not cover service calls, travelling time or consumable parts such as belts, dust bags, filters, hose or hose parts, rods and wands, floor tools and accessories, motor brushes and other like consumable items, unless defective in manufacture. In order to prolong the life of accessories and consumables, regular care and maintenance is recommended.
  8. Please retain your original proof of purchase which will be required before you can make a claim under this warranty. If proof of purchase can not be provided at the time of a warranty claim or service, any work carried out on the cleaner is chargeable.
  9. Any transportation and delivery costs involved in the repair of defective parts shall be borne by the claimant. In all instances, unless the product is transported by Cleanstar or a Cleanstar authorised representative, the product is transported at the owner's cost and risk while in transit to and from Cleanstar or its ASA.

Our goods come with guarantees that cannot be excluded under the Australian Consumer Law. You are entitled to a replacement or refund for a major failure and for compensation for any other reasonably foreseeable loss or damage. You are also entitled to have the goods repaired or replaced if the goods fail to be of acceptable quality and the failure does not amount to a major failure. The benefits conferred by this warranty are in addition to other rights and remedies under law in respect of the product to which this warranty relates.

**TO INQUIRE ABOUT MAKING A CLAIM UNDER THIS WARRANTY, PLEASE FOLLOW THESE STEPS:**

- a) carefully check the Instruction Manual and the terms of this warranty;
- b) have the name and model number of the appliance available;
- c) have the proof of purchase available (ie. invoice, receipt, etc) showing where the appliance was purchased from and date of purchase;
- d) call Cleanstar on **(03) 9460 5655** to speak to one of our customer service staff.